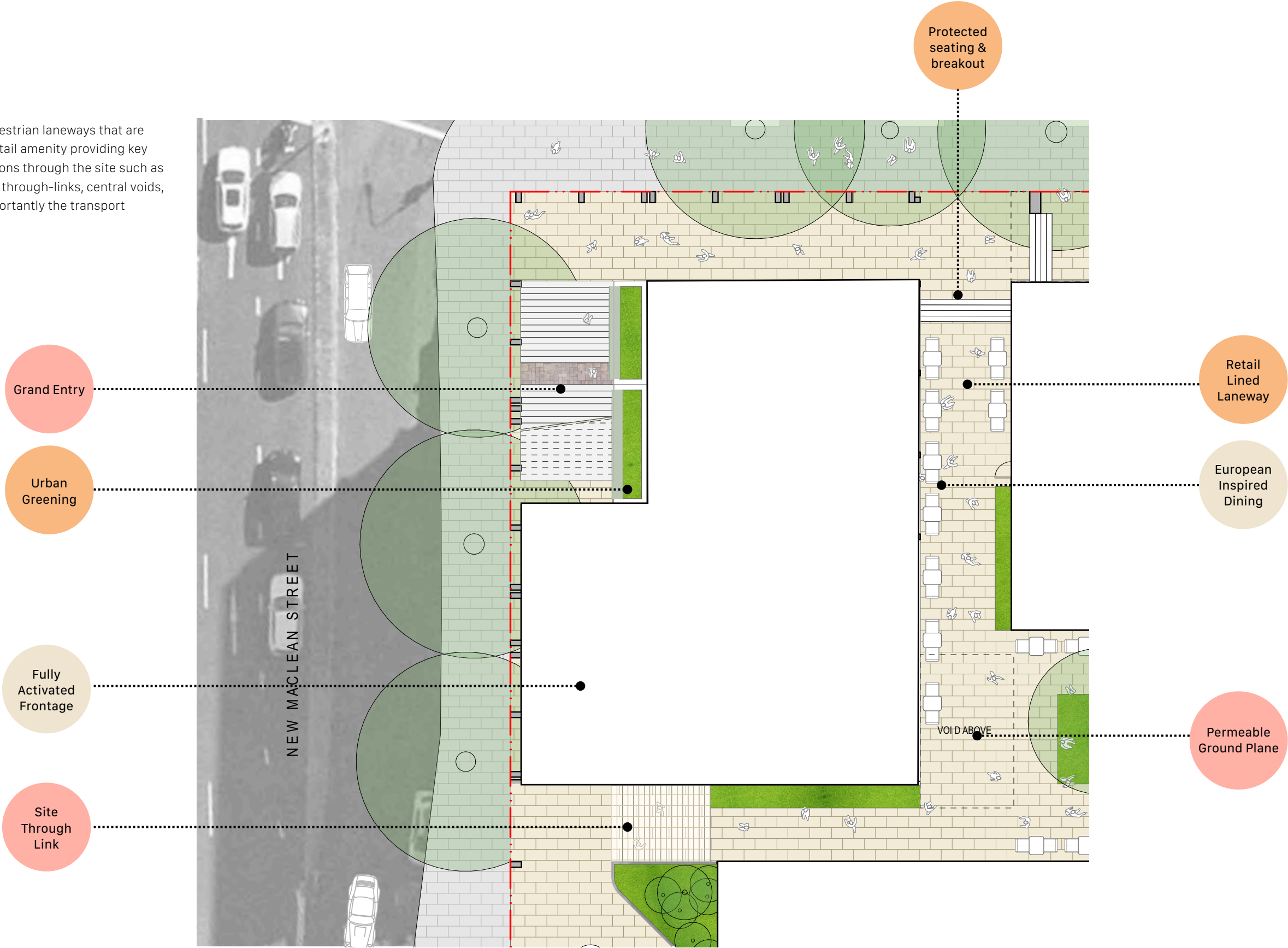


Retail Laneways

New South Head Road

Introduction of pedestrian laneways that are nestled amongst retail amenity providing key incidental connections through the site such as the grand stair, site through-links, central voids, town plaza and importantly the transport interchange.



New McLean Forecourt

New McLean Street

Located on the south-west corner of New McLean Street it will address the transition between the proposed site-through link and the community & residential entries to provide a visual anchor to the existing Trumper Park pathway toward Glenmore Road & the existing residential neighbours of New McLean Street.

500sqm
Public
Forecourt

MPCF Entry

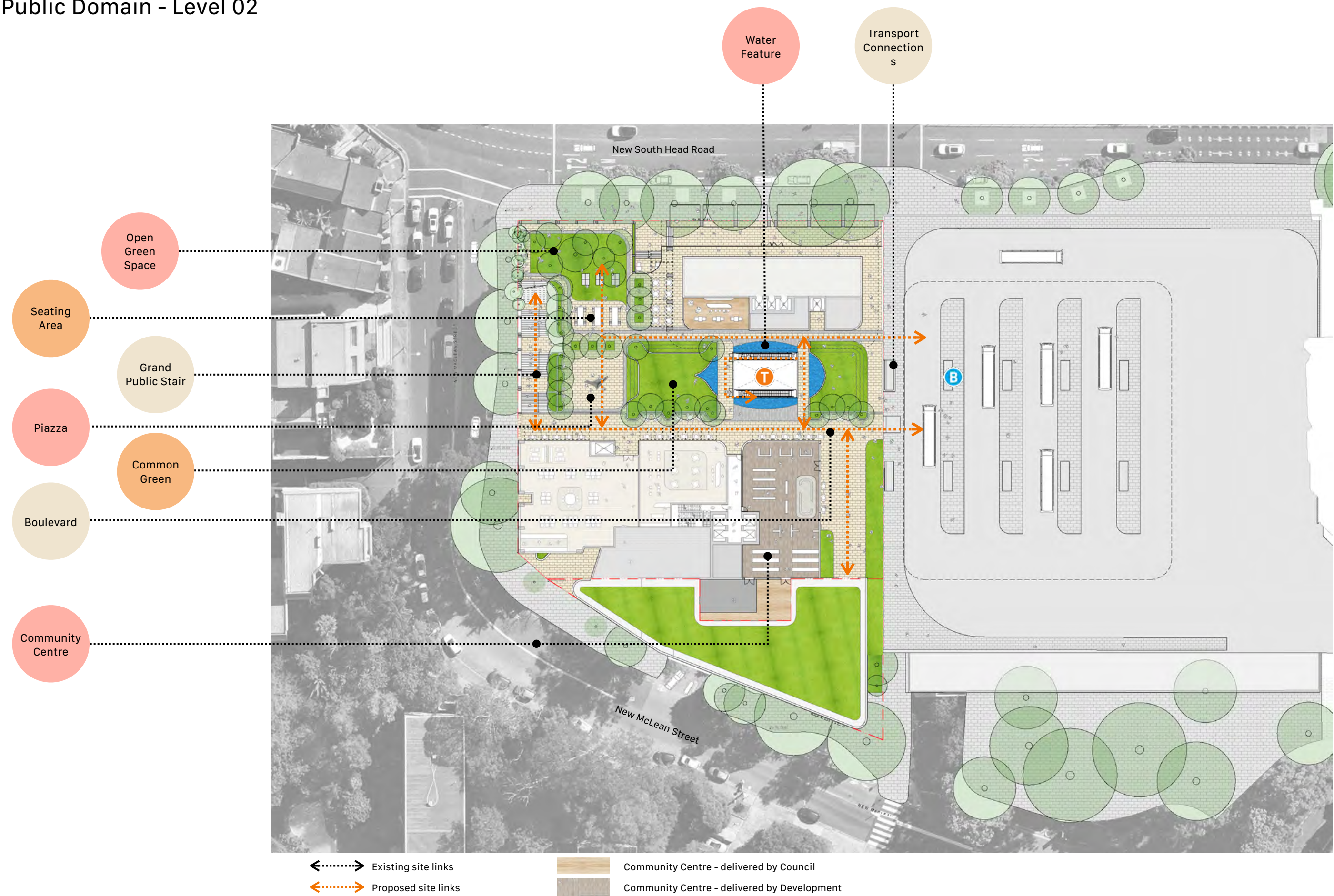


Access to
Retail &
Transport

Residential
Entry

Project Principles

Public Domain - Level 02



Grand Public Stair

Corner of New South Head Road & New McLean Street

The Village Green Stair is a grand public fronting the highly visible and iconic corner of the site.

Fusing the site through links, laneways, colonnades, public open green space, plaza, community facilities and forecourt to each other to create a permeable public focused town centre.

